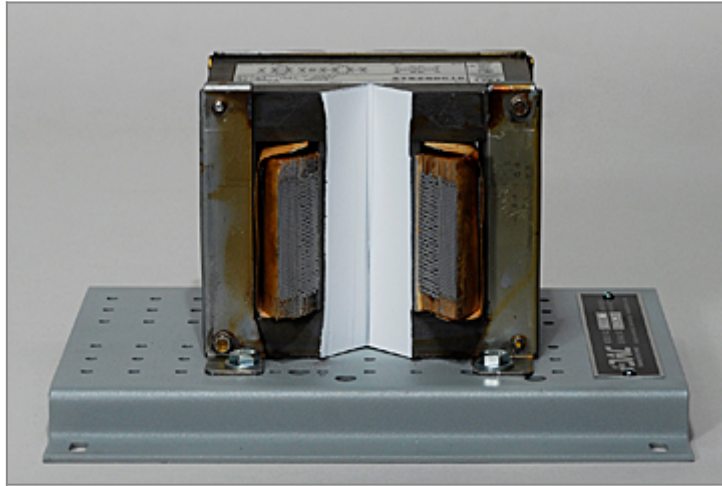


Single-Phase Transformer Cutaway



Model: 273-912

DAC Worldwide's Single-Phase Transformer Cutaway (273-912) is a detailed and professionally-crafted single-phase transformer cutaway that depicts a common shell-type, single-phase transformer. This common electrical component is found in manufacturing facilities, petro-chemical plants, and refineries. It can also be found in a wide variety of consumer and industrial products.

The cutaway includes a formed-steel mounting baseplate, allowing for stand-alone display, bench-top mounting, or mounting on specialized DAC Worldwide mounting benches and support structures.

Through careful sectioning, the complete internal configuration of the transformer can be seen. Common transformer brands and model numbers are chosen for sectioning for industrial relevance.

Details shown include laminated steel core, primary and secondary windings, and primary insulation. The cutaway also features the removal a 45° section of the coil and core.

To expand the training potential of the cutaway, you can add either an Electrical Trades Training Manual (IPT) and/or an Electrical Trades Handbook (IPT) from the list of available options.

FEATURES & SPECIFICATIONS

Important Product Note: *Photographs are representative and for reference only. Product appearance and dimensions may vary based upon component manufacturer and availability. Any product dimensions given, such as size and weight, are approximate and for directional use only. For the most accurate shipping dimensions and weights, please contact the manufacturer.*

- Sectioning of an actual industrial component (common transformer brands and model numbers are chosen for industrial relevance).
- Removal a 45° section of the coil and core.
- 13-gauge, formed-steel, powder-coated mounting baseplate.

- Provision for mounting on related DAC Worldwide bench, workstation, and storage products.
- Packaging for shipment via parcel service.

PRODUCT DIMENSIONS DISCLAIMER: *Product Dimensions are approximate. Shipping Dimensions and Weights are for directional use only and may change based on manufacturer variables. For the most accurate Shipping Dimensions and Weights, please contact the manufacturer.*

- **Product Dimensions**

(L x W x H)

8.5" x 10" x 8" (216 x 254 x 203 mm)

- **Shipping Dimensions**

(L x W x H)

12" x 12" x 12" (305 x 305 x 305 mm)

OPTIONS

- Recommended #902V Mobile Display Stand
- #560-000 - Electrical Trades Training Manual (IPT)
- #560-001 - Electrical Trades Handbook (IPT)

Address

DAC Worldwide
601 Heron Drive
Swedesboro, NJ 08085

Contacts

email: contact@dacworldwide.com
phone: (800) 662 5877