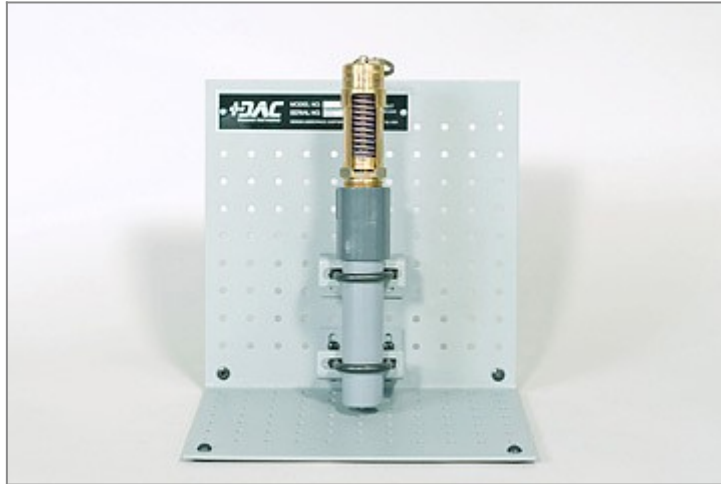


Pop-Off, Air Compressor Safety Relief Valve Cutaway



Model: 273-280

DAC Worldwide's Pop-Off, Air Compressor Safety Relief Valve Cutaway (273-280) is a detailed relief valve cutaway that depicts a common pop-off-type relief device used on air compressors commonly found in manufacturing facilities, petro-chemical plants, refineries, and other similar industrial and commercial environments.

The cutaway includes a formed-steel mounting assembly, allowing for stand-alone display, bench-top mounting, or mounting on specialized DAC Worldwide mounting benches and support structures.

Through careful sectioning, the complete internal configuration of the valve can be seen, while also allowing for disassembly for more complete inspection. All primary features have been retained.

FEATURES & SPECIFICATIONS

Important Product Note: Photographs are representative and for reference only. Product appearance and dimensions may vary based upon component manufacturer and availability. Any product dimensions given, such as size and weight, are approximate and for directional use only. For the most accurate shipping dimensions and weights, please contact the manufacturer.

- Sectioning of actual industrial component (common ASME-compliant component brands and models chosen for industrial relevance).
- Cleaning, priming, and painting using a high-durability polyurethane coating.
- Color coding of component parts where applicable.
- 14-gauge, formed-steel, powder coated mounting stand with component attachment brackets and PVC pipe mounting spool.
- Provision for mounting on related DAC Worldwide bench and workstation products.
- Original equipment maintenance manual is provided.
- Packaging for shipment via parcel service or motor freight.

PRODUCT DIMENSIONS

DISCLAIMER: *Product Dimensions are approximate. Shipping Dimensions and Weights are for directional use only and may change based on manufacturer variables. For the most accurate Shipping Dimensions and Weights, please contact the manufacturer.*

- **Product Dimensions**

(L x W x H)

9in. x 9in. x 10in. (230 x 230 x 250 mm)

OPTIONS

- Recommended #902V Mobile Display Stand

Address

DAC Worldwide
601 Heron Drive
Swedesboro, NJ 08085

Contacts

email: contact@dacworldwide.com
phone: (800) 662 5877