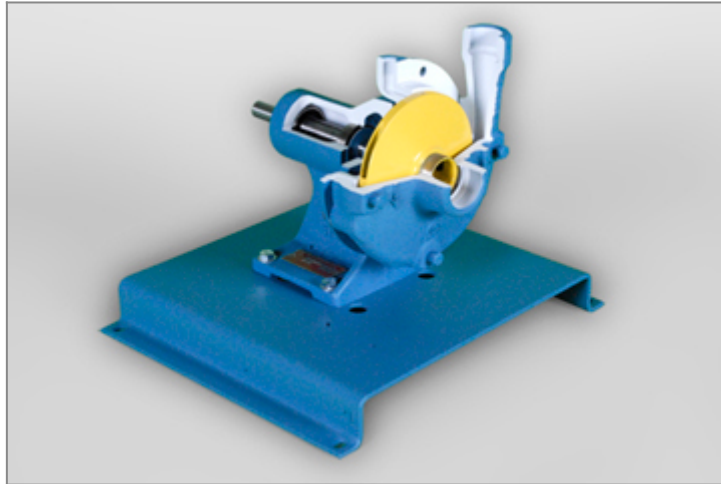


Centrifugal Pump Cutaway



Model: 278-101

DAC Worldwide's Centrifugal Pump Cutaway (278-101) depicts a sectioned pedestal-type centrifugal pump that supports convenient and meaningful classroom training in the operating principles, construction details, and maintenance of common centrifugal process pumps used in industry and commercially. The full-size, fully-detailed example of an actual industrial overhung centrifugal pump gives learners a first-hand view into a component that is found in various applications worldwide.

This basic mechanical cutaway includes a variety of sectioned components, such as seal features, hardware locations, and bearings. All of the machine's components have been retained, allowing for convenient classroom training in the operation, construction, and maintenance of these common pieces of process equipment.

Enhance Training with Hands-On Cutaway Industrial Components

The Centrifugal Pump Cutaway provides a realistic training introduction to industrial pump components, which will make introductory courses in pump maintenance and operation more productive, realistic, and memorable for learners. The pump components are industrial-grade made by leading manufacturers, mimicking what students might encounter on-the-job for industrial relevancy.

The cutaway features carefully-planned cutaway areas that are color-coded to showcase the internal configuration of the pump. The color-coding of surfaces, seal elements, impellers, and exterior surfaces use easy-to-see contrasting colors, highlight the varying directions of flow. All of the cutaway's gaskets, seals, and bearings are also visible, enhancing students' visual learning.

The equipment used within the trainer is cleaned, primed and painted using a high-endurance urethane coating, providing durability to stand up to frequent use.

Expand Training with Additional Mechanical Model Options

The Centrifugal Pump Cutaway is only one of DAC Worldwide's expansive mechanical training devices, which also include the Pump Maintenance Trainer (275), the Pump Principles Trainer (276), the ANSI Pump Cutaway (278), and many more!

Optional Textbook Available

A copy of this course's Textbook is an available option with the training system. The textbook, called *Audel's Pumps and Hydraulics*, presents clear objectives and performance standards for learners. If you would like to inquire about purchasing Textbooks for your program, please contact your local DAC Worldwide Representative for more information.

FEATURES & SPECIFICATIONS

Important Product Note: *Photographs are representative and for reference only. Product appearance and dimensions may vary based upon component manufacturer and availability. Any product dimensions given, such as size and weight, are approximate and for directional use only. For the most accurate shipping dimensions and weights, please contact the manufacturer.*

- Sectioning of an actual centrifugal pump
- Industrial-duty pumps by leading manufacturers are chosen for industrial relevancy
- Cleaning, priming, and painting using a high-durability urethane coating.
- Color-coding of cutaway surfaces, impeller and exterior surfaces using contrasting colors.
- Replacement plated hardware, where necessary.
- All gaskets, seals, and bearings visible.
- 7-Gauge, formed-steel, powder-coated, baseplate, with provision for tabletop mounting and mounting on related workstation and storage products.
- Crating for shipment via motor freight, parcel service, or courier.

PRODUCT DIMENSIONS

OPTIONS

- #532-022 - Operator's Guide To Centrifugal Pumps

Address

DAC Worldwide
601 Heron Drive
Swedesboro, NJ 08085

Contacts

email: contact@dacworldwide.com
phone: (800) 662 5877