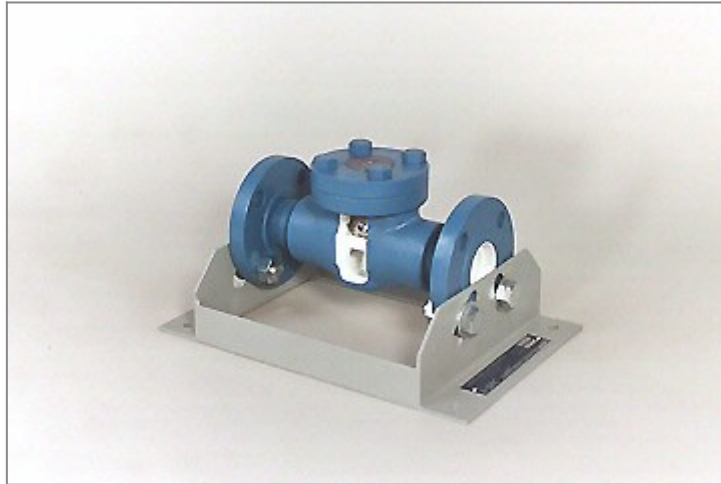


Ball Check Valve Cutaway, 1" - 2"



Model: 268

DAC Worldwide's Ball Check Valve Cutaway, 1" - 2" (268) allows for convenient classroom training in the operation, construction, and maintenance of an industrial ball check valve. Through carefully planned sectioning and color-coding, the complete internal configuration of the valve is exposed and showcased. Seal features and hardware locations have been retained, allowing for "hands-on" training in maintenance.

FEATURES & SPECIFICATIONS

Important Product Note: Photographs are representative and for reference only. Product appearance and dimensions may vary based upon component manufacturer and availability. Any product dimensions given, such as size and weight, are approximate and for directional use only. For the most accurate shipping dimensions and weights, please contact the manufacturer.

- Sectioning of actual hardware (common valve makes and models chosen).
- Cleaning, priming, and painting using a high-durability, urethane coating.
- Color-coding of valve body, internal surfaces, seat, and closure devices, using contrast colors.
- Replacement, plated hardware, where required.
- All seals, and seats shown.
- Welded, formed-steel, mounting stand with provision for tabletop mounting.
- Provision for mounting on related bench, workstation and storage rack products.

PRODUCT DIMENSIONS Contact DACW

DISCLAIMER: Product Dimensions are approximate. Shipping Dimensions and Weights are for directional use only and may change based on manufacturer variables. For the most accurate Shipping Dimensions and Weights, please contact the manufacturer.

OPTIONS Recommended #902V Mobile Display Stand

Address

DAC Worldwide
601 Heron Drive
Swedesboro, NJ 08085

Contacts

email: contact@dacworldwide.com
phone: (800) 662 5877