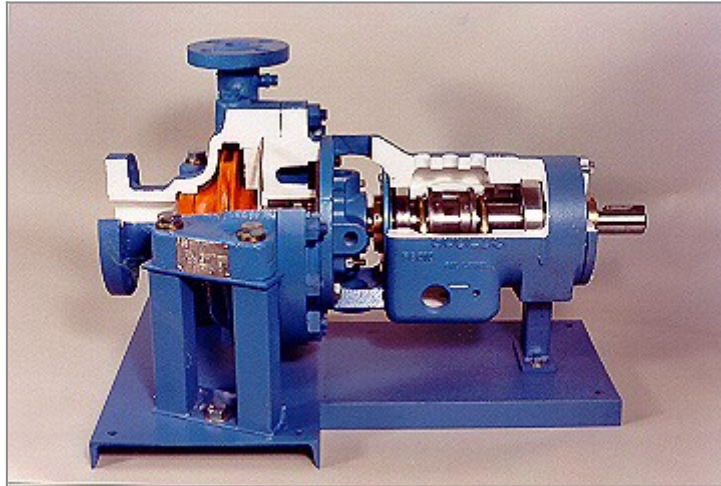


API Pump Cutaway



Model: 278-165-PAC

DAC Worldwide's API Pump Cutaway (278-165-PAC) is a vital industrial teaching aid for pump operation and pump maintenance training. This sectioned industrial centrifugal pump features cutaway areas and color-coding to showcase the internal configuration and unique features of a standard API (American Petroleum Institute) pump. This system also includes DAC Worldwide's Mid-Duty Cart (924).

Centrifugal pumps that meet the API 610 standard are vital for high temperature and high pressure applications for petroleum refineries, petrochemical processes, oil and gas processing, and more! The construction and design of these pumps is vital because the hydrocarbons will burn or explode if released inadvertently. This important centrifugal pump training aid will allow learners to see exactly how an API centrifugal pump is constructed. This dynamic product is an irreplaceable addition to refinery training programs and oil and gas industry training programs.

FEATURES & SPECIFICATIONS

- Sectioning of an actual API pump
- Cleaning, priming, and painting using a high-durability urethane coating.
- Color-coding of cutaway surfaces, seal elements, impeller and exterior surfaces using contrasting colors.
- Replacement plated hardware.
- All gaskets, seals and bearings visible.
- Custom, steel channel baseplate, with integrated support pedestals.
- Includes Mid-Duty Cart (924).

PRODUCT DIMENSIONS

- 36"L x 20"W x 26"H (910 x 500 x 660 mm)

OPTIONS Recommended #903F Extended Electromechanical Workstation

Address

DAC Worldwide
3 Killdeer Court, Suite #301
Swedesboro, NJ 08085

Contacts

email: dacwcontact@amatrol.com
phone: (800) 662 5877